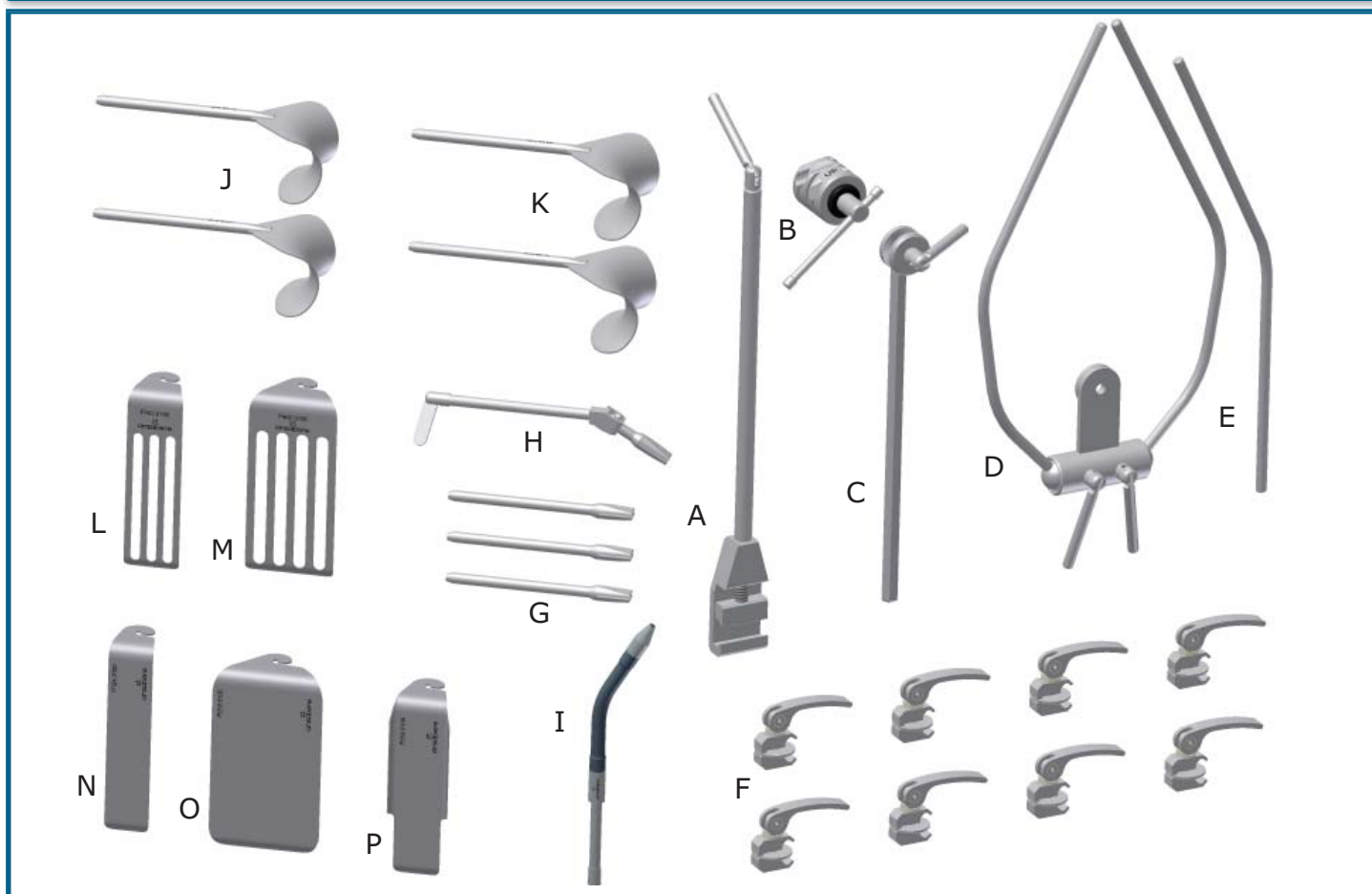




## RETRACTOR UNIVERSAL ANSABERE - Mod. 8020



## Kit Cirugía General / Ginecología Mod. 8020-G3



| UNID. | REF. | DESCRIPCIÓN |                               |
|-------|------|-------------|-------------------------------|
| A     | 1    | B150        | Brida vertical                |
| B     | 1    | B400        | Brida dentada                 |
| C     | 1    | R300        | Barra porta marco             |
| D     | 1    | F300        | Marco doble rótula            |
| E     | 1    | F150        | Accesorio de cierre           |
| F     | 8    | B502        | Brida universal               |
| G     | 3    | P205        | Porta valvas                  |
| H     | 1    | P405        | Porta valvas basculante       |
| I     | 1    | O105        | Terminal iluminación flexible |

| UNID. | REF. | DESCRIPCIÓN |                                     |
|-------|------|-------------|-------------------------------------|
| J     | 2    | VC312M      | Valva de pared con mango 90x60mm    |
| K     | 2    | VC316M      | Valva de pared con mango 100x60mm   |
| L     | 1    | VP452       | Valva ranurada maleable 50x170mm    |
| M     | 1    | VP462       | Valva ranurada maleable 80x170mm    |
| N     | 1    | VP124       | Valva plana estrecha 40x180mm       |
| O     | 1    | VP258       | Valva plana ancha (Fence) 100x170mm |
| P     | 1    | VP350       | Valva pélvica (St. Marks) 56x170mm  |